

CT



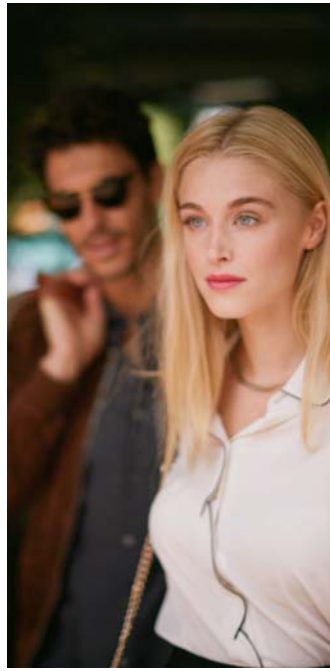
CT 200h



---

“Welcome to the best CT we’ve ever created. Powered by Lexus Hybrid Drive, it offers a potent blend of bold design, exceptional environmental performance and some of the most advanced automotive technologies available today, including Lexus Safety System + as standard.”

CT 200h CHIEF ENGINEER  
CHIKA KAKO



**06**  
**DESIGN**

The Look: Bold design for tomorrow's cities

**08**  
**SAY YES TO THE CITY**

Experience the Lexus lifestyle

**10**  
**CRAFTSMANSHIP**

Experience Japanese 'Omotenashi' hospitality

**16**  
**PERFORMANCE**

Exploring Italy's fashion capital in the CT

**18**  
**TECHNOLOGY**

The Drive: Cleaner in the city thanks to pioneering environmental technology

**24**  
**SELECT**

Showcasing head-turning design, advanced technology and Japanese 'Takumi' craftsmanship, in this brochure we invite you to prepare for choosing your CT 200h.

**54**  
**THE LEXUS EXPERIENCE**

Learn how we aim to treat every customer as if they were a guest in our own home

Introducing the bold Lexus CT 200h, with a more distinctive front grille, LED lights and dynamic rear stance. Available in a range of stunning new colours and two-tone exteriors, you can create your favourite look for the city. Powered by Lexus Hybrid Drive - a pioneering technology already fitted to over 1 million Lexus vehicles - it blends petrol and electric power for responsive handling and smooth acceleration, yet consumes a mere 3.6 l/100 km\* of fuel. Importantly for our cities, in near-silent EV (Electric Vehicle) mode it uses no petrol and produces zero emissions and, because it's a Lexus hybrid, never needs plugging in to recharge.

Inside, the CT 200h's luxurious cockpit offers a unique Lexus welcome, with beautifully stitched leather seating and high-quality materials. It can be equipped with advanced technologies like a large 10.3-inch central display with Remote Touch, Lexus Premium Navigation and 13-speaker Mark Levinson® audio. For your safety, and that of other road users, Lexus Safety System + is fitted as standard. This includes a Pre-Collision System with pedestrian detection; Lane Keeping Assist to help you stay on course; Automatic High Beam for enhanced vision at night; Road Sign Assist and Adaptive Cruise Control.

\* For the Eco grade.









CT 200h



01 Bolder 'spindle grille' and LED headlights  
02 Dynamic stance with new rear LED lights

01



## THE LOOK: CREATING BOLD DESIGN FOR TOMORROW'S CITIES

For the CT 200h our design team were given an ambitious brief: to create a dynamic five-door luxury compact for the world's fastest growing cities. A car with eye-catching lines that stands out boldly – even in places that pulse with energy and brave ideas.

Leading the team was CT Chief Engineer Chika Kako. "At Lexus we're never content; we never settle for what already exists," she says. "Our customers are looking for originality and to achieve this we take a radical approach to innovation."

But what does that mean in design terms? How do you make a car that's instantly at home in places where the future is being created? The answer can be found at the Lexus Design Centre in Aichi Prefecture, Japan. Here the sophisticated urban look of the CT was fashioned using pioneering Virtual Reality (VR) techniques.

For instance, the 'Real Scale Theatre' facility enabled us to simulate the car's appearance in cityscapes around the world. Using digital urban backdrops from places like Tokyo, London or Milan, our design team was able to evaluate the visual impact of the car's exterior in the very environments in which it will ultimately be driven.

VR was also used to create the CT's cockpit. Seated within a mock-up of the car's interior, Lexus ergonomists and interior designers wore 3D headsets to simulate the location and operation of features like Remote Touch and the new 10.3-inch central display.

"Each Lexus is human-oriented – this is at the heart of our design philosophy," says CT Chief Designer Tetsuo Miki. "These futuristic tools allow us to visualise how controls, instruments and design details surround the driver, so we can perfect interiors down to the smallest detail."



Great design isn't just about terabytes of data, of course. A car designed by machines is a car without soul. Superb craftsmanship defines the CT, as it does every Lexus. You wouldn't expect anything less from a design tradition that has been strongly influenced by thousands of years of Japanese 'Takumi' craftsmanship. "We don't just want to transport people, we also want to transport their senses" says Tetsuo Miki.

So, whilst the CT creative idea was conceived in the brains of our designers and nursed in their sketchpads, it soon advanced to powerful computers where the car's lines were elaborated and refined. But then, at a certain point, high technology was put aside. It was replaced by the earthy smell of damp clay as our designers worked with 'Takumi' craftspeople who hand-carved the contours of the CT. The intricate sculptural qualities of the surfaces on the new 'spindle grille' or aerodynamic fins on the door pillars and rear lights owe much to this process.

"My job is to take the sketch and interpret it into a 3D form. The designer has the inspiration, the modeller has the hands," explains one of the 'Takumi' craftspeople in the modelling studio. "Sometimes the designer may hold up a bamboo leaf, twist it and say 'This is what I want,' and then I recreate the curve in clay."

All this lies behind the unmistakable look of the Lexus CT. So when you're driving it in your city and you notice people taking in its 'spindle grille', its sleek profile and sculpted tailgate, you'll know it's because we've harnessed the best of human creativity and advanced technology. Guided by a mindset that doesn't rest until we've created a car of great depth and sophistication.



SPORT: Tune those energy levels for the day ahead with an early morning jog in the beautiful Parco Sempione, close to the historic heart of Milan. The perfect training partner in the city, the dynamic CT 200h F SPORT features an even bolder 'spindle grille' inspired by the new Lexus LS, exclusive F SPORT interiors, more responsive suspension and 17-inch F SPORT alloy wheels.





**BREAKFAST:** After an hour on your feet, use the CT's intuitive Lexus Premium Navigation system to locate the nearest bar for a matcha latte. Or reward yourself with a homemade brioche in one of the city's upmarket pasticcerias. Easy to use on the move, the new 10.3-inch screen is operated by Remote Touch or voice commands. With vivid 3D graphics and many mapping options, once parked, the system can even generate a QR code for your smartphone, to help you reach your final destination on foot.



**SHOPPING:** The streets of Milan offer a shopping masterclass for discerning visitors, where you will accumulate everything from limited-edition shoes to interior design objects. The sumptuous Galleria Vittorio Emanuele II can claim to be one of the world's first shopping malls and remains a magnet for lovers of Italy's most alluring fashion brands. Even with armfuls of shopping, the CT 200h offers excellent luggage space and load carrying versatility. With all seats upright, there is 275 litres of load volume (up to the level of the luggage cover). The rear seats fold 60/40, and folding them down together creates a virtually flat storage area that boosts load capacity to 985 litres.

**BEAUTY:** Available in bold new colours like Solar Flare or eleven two-tone options, the CT is guaranteed to turn heads, even in a global fashion capital. After all that admiration, book yourself in for a bespoke makeover at one of the city's many chic nail studios, where you can enjoy not only a luxurious manicure or pedicure but also a tiny, aromatic espresso to revive body and soul.

**MUSIC:** Music in Milan isn't all about La Scala, yet live music isn't always easy to find. In the evening, visit one of the clubs in the Navigli quarter and scout for emerging voices from a vibrant jazz scene. Then exit to a city which has assumed a quietness quite at odds with its daytime bustle. And imagine the near silence of the CT's pioneering Lexus Hybrid Drive technology as it weaves its way through these streets with a super-efficient blend of petrol and electric power.



## EXPERIENCE JAPANESE 'OMOTENASHI' HOSPITALITY

Just as you'd enjoy in the world's leading boutique, hotels and restaurants, the Lexus CT offers a unique kind of luxury. In fact, even before you get behind the wheel, it is already preparing a special 'Omotenashi' welcome. Inspired by Japanese rituals like the tea ceremony, every guest is treated in a heartfelt way. So, as you approach the car, you're greeted by orchestrated

illumination. Once inside, after you've pressed the start button, the driver's seat and steering wheel will adjust to your own personal settings. Then as you drive off, Lexus Safety System + will support your natural driver skills, helping you stay in lane, assisting you in heavy traffic, watching for hazardous situations with other road users, and even taking remedial action should you ever be at risk.

Seated in figure-hugging leather seats, you and your guests will gradually discover exquisite craftsmanship details like the traditional Naguri-style aluminium inlays available on the CT 200h F SPORT.



## CRAFTSMANSHIP



The word 'Naguri' stems from a traditional Japanese wood-shaving technique. Ayumi Kido, Executive Chief Designer at a Lexus interior design hub explained: "The process had been forgotten for centuries, then one of our suppliers informed us they

had developed a new way of crafting aluminium to create a traditional Naguri finish. The new inlay works wonderfully to reflect both traditional Japanese art and the spirit of 'Takumi' craftsmanship in the CT." Find out more about 'Takumi' craftsmanship on page 15.







LEXUS

AIR VENTS

3:49 21.0

WIFI, Bluetooth, A/C, DUAL

LEXUS multimedia navigation

MEDIA

SPORT

PASSENGER AIR BAG

SRS AIRBAG





# PRODUCTION IS OVERSEEN BY 'TAKUMI' MASTER CRAFTSPEOPLE WHO INSPECT EVERY CT IN OUR 'QUIET DOME' FACILITY

Built at our award-winning Kyushu plant, the CT 200h redefines build quality for this kind of luxury compact. Quality is everywhere: exquisitely finished leather, beautifully grained wood inserts from sustainable plantations and flawless paintwork that shines brighter and longer than on any other compact (we spray it with the same self-repairing paint as used on our flagship sedan). Production is performed by highly skilled teams, overseen by 'Takumi' master craftspeople, who check that every CT meets our award-winning standards. On completion, cars are examined in our 'Quiet Dome' for smoothness and quiet running before undergoing a 30 km final test drive.

Beautifully finished front seats provide excellent lateral support when cornering and enduring relaxation on longer journeys. Everything you touch communicates the car's quality, from the leather-covered steering wheel to the soft touch leather that juxtaposes with finely crafted metal details. The CT's impressive quietness is partly achieved through extensive sound insulation, much of which is bio-sourced. For comfort, Electronic Climate Control offers precise temperature regulation, and cabin air is filtered to remove pollen and dust.

The perfect environment in which to enjoy music, the CT can also be specified with an amazing 13-speaker Mark Levinson® Premium Surround system. Fitted exclusively to Lexus cars, Mark Levinson has, for audiophiles, become synonymous with high-performance sound technology. Each speaker of this bespoke system is designed to fit the exact acoustic properties of the cabin. Delivering 7.1-channel digital surround sound, the system provides a true home-theatre-style experience for enjoying music and, when the car is stationary, watching DVDs.



01



02



03



04

Left: Driver-focused cockpit with low hip position

- 01 The CT 200h resets benchmarks for craftsmanship
- 02 Lexus Premium Navigation controlled by Remote Touch
- 03 New 10.3-inch display
- 04 13-speaker Mark Levinson® Premium Surround system



---

## EXPLORING ITALY'S FASHION CAPITAL IN THE CT

---

Driving the CT through historic yet vibrant streets, you'll enjoy a real sense of connectedness in a car that is perfectly balanced and fun in the city. It's precise and controlled, especially when cornering, thanks to Electric Power Steering and a rigid chassis built using breakthrough adhesive technology and lightweight aluminium components.

Heading out on the motorway, at higher speeds the petrol engine cuts in, almost silently, but still receives assistance from the electric motor when required. Through the near perfect distribution of its dual power sources, the CT 200h provides exceptional driving comfort - together with lower emissions and fuel consumption.

On the many winding roads we encounter, double wishbone rear suspension ensures excellent handling and a comfortable ride. Using Drive Mode Select - conveniently positioned on the central console - you can choose between ECO mode for maximum efficiency, NORMAL for everyday driving comfort and SPORT for dynamic responsiveness. Or switch to EV (Electric Vehicle) mode for zero emissions when you return to the city.





PERFORMANCE



---

## THE DRIVE: CLEANER IN THE CITY THANKS TO PIONEERING ENVIRONMENTAL TECHNOLOGY

---

Is it possible to look at two things simultaneously? That is the question on this warm spring morning at Milan airport.

When meeting someone for the first time, it's customary to make plenty of eye contact, regardless of any distractions. On this occasion, however, even such a basic rule of etiquette proves difficult as Lexus Chief Engineer Chika Kako extends her hand while stealing a quick, covert glance at the very, very distracting CT 200h hybrid compact parked a few metres away.

The dilemma passes. Electrically adjusting the sumptuous leather driver's seat, Kako explains that we'll be driving around 50 km into the city centre - a perfect trip to form a first impression. And because this is a Lexus, we have reservations at a very hot, very buzzy, Michelin-starred Japanese restaurant. Sushi for lunch: what could be better?

My host speaks our destination into Lexus Premium Navigation which calculates the most ecological route to the restaurant, and the car glides away in almost complete silence - but more on that later. As we approach the city centre we discuss design trends, urban mobility, sights to see. Almost as if summoned by our words, the giant form of the world-famous Duomo di Milano appears on our right.

The cathedral is a remarkable sight, immeasurably vast with a thicket of spires and steeples that shimmer against the azure sky. It took more than 600 years to construct, even requiring a new canal system to transport the pink-hued Condoglian marble from Lake Maggiore further north.

The delicate marble is under relentless attack from the aggressive fumes of the Milanese traffic, so the façade is constantly cleaned (with atomised water) and micro sand-blasted. From her tone, it's clear that Chief Engineer Kako approves of the effort that goes into protecting the building.

Of course she approves; Kako herself has overseen the painstaking development of the CT 200h, one of the most complete environmental concepts the automotive industry has seen. She and her team have delivered a clean yet high-end luxury car that dazzles to the last detail.

Back to that silence. In the stop-start, mid-morning traffic, the CT runs whisper-quiet in EV (Electric Vehicle) mode before switching into a hybrid mix at higher speeds. Meanwhile, the battery is constantly recharged by the Lexus Hybrid Drive's generator or while braking, so no need for top-up stops.

"And when you've had enough silence..." Kako grins, switching on the 10-speaker Panasonic® audio

system and filling the car with concert-like sound. The timbre is flawless, produced by the world's only bamboo charcoal resin speaker diaphragms (that are 100% recyclable too).

We cruise past one of the city's many upscale shopping arcades, the pavement bustling with designer bags, bare legs and ice creams: the mercury is rising. Kako adjusts the air conditioning, which is powered directly by the hybrid battery (rather than the petrol engine) to deliver even greater fuel efficiency and decreased noise.

All this effort to reduce and be efficient would be impressive enough on its own, but in a luxury compact it's a rare accomplishment. The cabin features a bamboo trim that is limousine-like in its refinement; it's no surprise to learn that the bamboo is specially chosen from sustainable plantations in Japan, while luggage compartment mouldings are manufactured from a resin derived from sugar cane.

Sight, sound, touch, this is a car to delight all the senses. But, all too soon, we arrive at our destination and must emerge from the cocoon of the CT. Over a spectacular-tasting lunch, Kako tells me about the Kyushu eco factory where the car is built, a facility that has 'zero landfill' status meaning any waste from the manufacturing process is repurposed or used to generate additional energy.



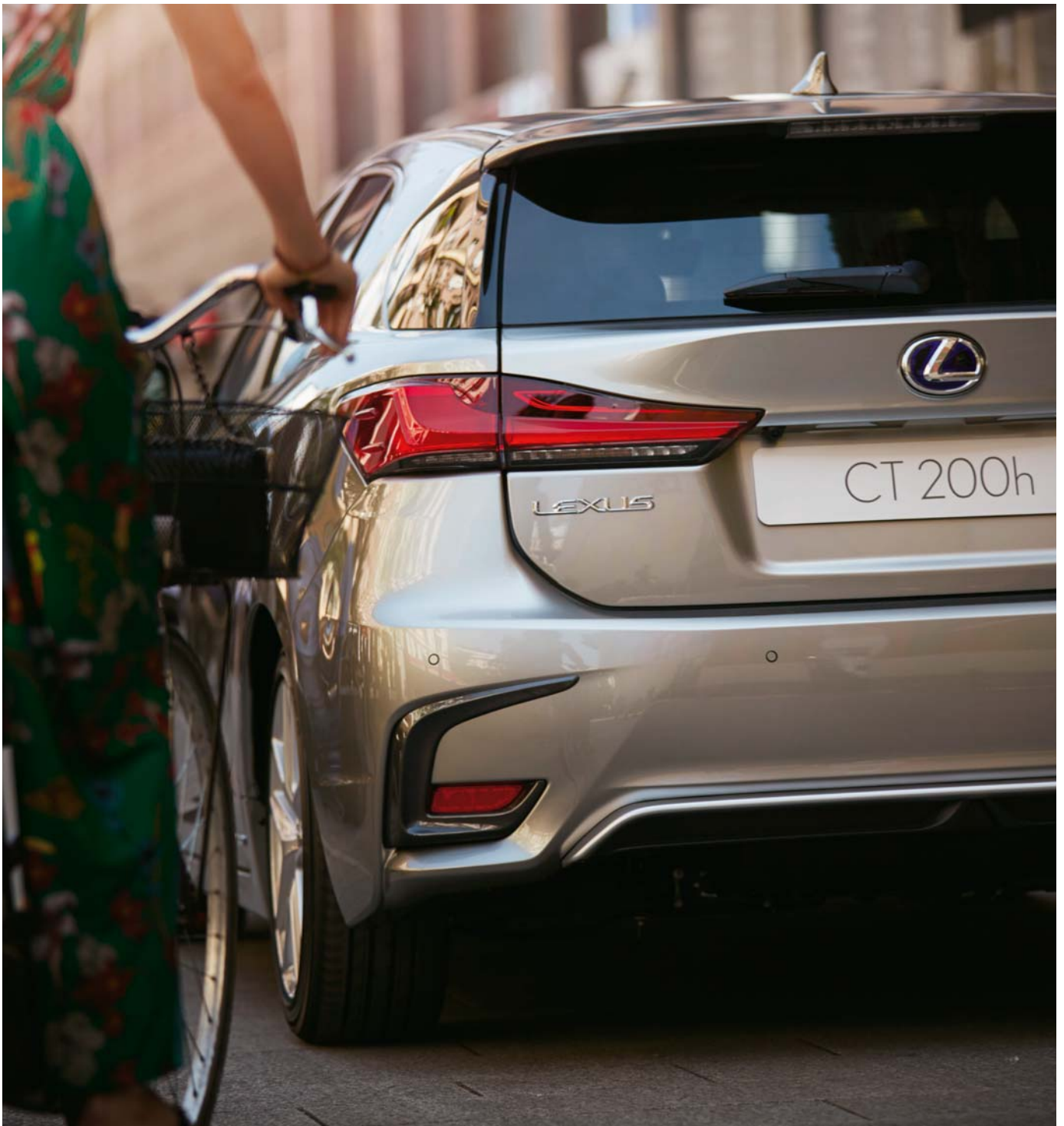


## ENVIRONMENTALLY FRIENDLY MATERIAL WINS LEXUS DESIGN AWARD AT MILAN DESIGN WEEK

Proving we don't just talk about improving the planet, but are taking real steps to achieving it, at the 2016 Milan Design Week, Lexus named AGAR PLASTICITY by AMAM winners of the Lexus Design Award 2016. AGAR PLASTICITY is a project exploring how agar, a gelatinous material obtained from marine algae, can be used as an environmentally friendly packaging materials alternative to plastic.

AMAM is a design group formed in 2015 by Kosuke Araki, Noriaki Maetani and Akira Muraoka who studied at the Product Design Department of Tama Art University. Speaking about their project, they explained: "Seaweed-derived agar is traditionally consumed as food in Japan, and is used in scientific and medical fields worldwide. Sold in a dry state, agar has a porous, feathery structure and is very light despite its volume. Believing biodegradable substitutes to plastics are needed, we decided to investigate ways of extracting agar by boiling specific kinds of red algae. We found out that, because agar is also mouldable, it could not only be used as a cushioning material, but also as a packaging material. We also explored the possibility of an agar-derived plastic material. After use, agar products can be disposed of in an environmentally friendly way. It can serve as a material to improve the water-retention characteristics of soil and, should it drift into the sea, it would not harm marine life."







---

## ANTICIPATING YOUR NEEDS WITH CREATIVE TECHNOLOGY

---



For us, creating a car is all about anticipating the needs of the people who will use it. As part of this we naturally spend a lot of time thinking how we can make driving safer in all sorts of diverse situations. What are the potential dangers? How could they be avoided or mitigated? How can we harness new technologies to enhance safety and at the same time make driving more relaxed and stress-free? On these pages we share some of the results of this thought process. You'll find all these solutions in the CT.

### **PARKING ASSIST MONITOR**

Engage reverse and the view behind the car is relayed to the Lexus Media Display. With the upgraded Lexus Premium Navigation specified, on-screen guides are additionally displayed to assist parking.

### **HILL-START ASSIST CONTROL**

Hill-start Assist Control maintains brake pressure to help prevent the CT 200h from moving backwards when starting off on a slope. In addition to reducing driver fatigue, Hill-start Assist Control also minimises wheel-spin on slippery inclines.

### **ELECTRONIC BRAKE-FORCE DISTRIBUTION / BRAKE ASSIST SYSTEM**

Electronic Brake-force Distribution works with ABS to ensure optimum brake-force is applied to each wheel, according to road conditions. The Brake Assist System comes into action during emergency braking and increases brake-force automatically if required.

### LEXUS SAFETY SYSTEM +

Benefitting from our lead in accident prevention research, all CT 200h models are fitted with Lexus Safety System + as standard. This includes a Pre-Collision System with pedestrian detection; Lane Keeping Assist with Sway Warning function to help you stay on course; Automatic High Beam for enhanced vision at night; Road Sign Assist that recognises traffic signs and Adaptive Cruise Control, which regulates your speed to that of the vehicle in front.

### PRE-COLLISION SYSTEM

Millimetre-wave radar and an on-board computer calculate collision risk ahead. If the risk is high, the driver is alerted by audible and visual warnings and brake pressure is increased. When a collision is deemed unavoidable, the brakes will be applied automatically as necessary and the front seatbelts tightened.

### PEDESTRIAN DETECTION

As part of the Pre-Collision System, if an object (such as a pedestrian) is detected in front of the CT, automatic braking will activate when the car is travelling between about 10 and 80 km/h to help avoid a collision.

### LANE KEEPING ASSIST

Lane Keeping Assist (LKA) uses a camera in the front windscreen to monitor your position in lane. If you start drifting out of lane, LKA will activate a warning buzzer and give brief corrective steering input.

### AUTOMATIC HIGH BEAM

At night, Automatic High Beam uses the same camera as Lane Keeping Assist to detect oncoming vehicles and automatically dip the high beam headlights. This reduces the chance of accidentally dazzling other drivers and lets you concentrate on the road ahead.

### ADAPTIVE CRUISE CONTROL

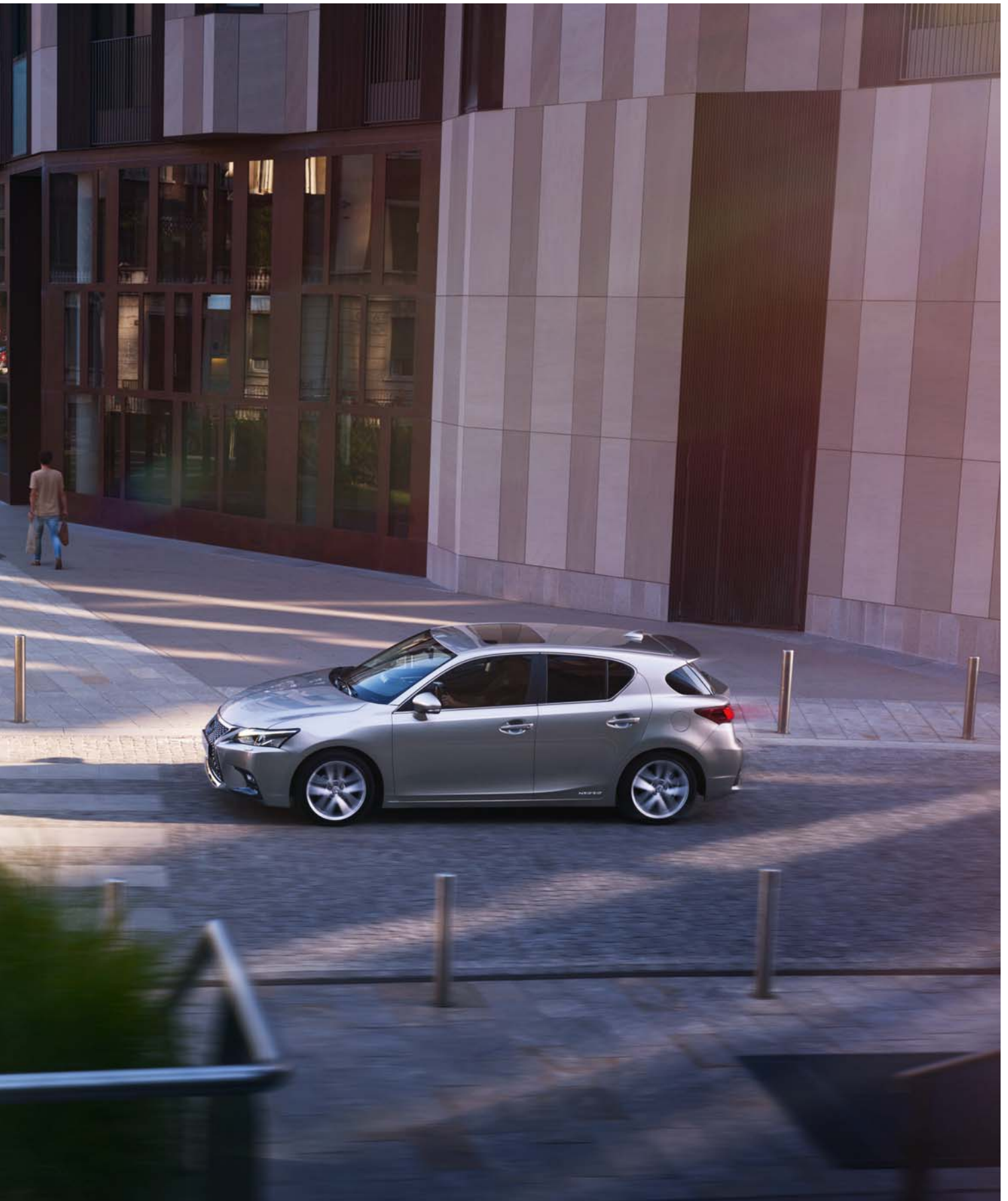
For a more relaxing drive, Adaptive Cruise Control maintains a set distance between the CT and the vehicle ahead, even if that vehicle varies its speed.

### ROAD SIGN ASSIST

The Road Sign Assist (RSA) system on the CT recognises traffic signs using the windscreen mounted camera, and provides information to the driver in the multi-information display. RSA can detect signs that are compliant with the Vienna Convention (including electro-luminescent and flashing signs).









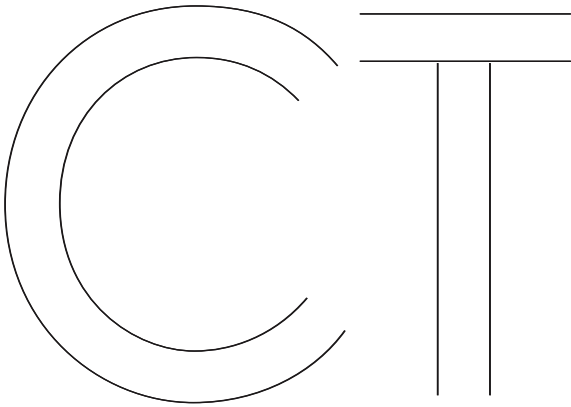
Welcome to the CT 200h hybrid compact. Showcasing head-turning design, advanced technology and Japanese 'Takumi' craftsmanship, in this brochure we invite you to prepare for choosing your Lexus.

The CT 200h features a bold 'spindle grille', flanked by jewel-like LED headlights and dynamic rear styling. To aid handling and reduce wind noise, the CT has a long, streamlined profile and a shark fin antenna. For enhanced stability, aerodynamic details include surfboard-like fins beneath the car and winglets on the rear lights and door pillars.

Driving the CT you'll experience Lexus luxury in a compact car powered by our pioneering hybrid technology. You'll also enjoy smooth performance, hallmarked by extremely low CO<sub>2</sub> emissions from just 82 g/km. In EV (Electric Vehicle) mode you can drive almost silently, using no fuel and emitting zero harmful emissions.

Inside, the CT's driver-focused cockpit has a new 10.3-inch central display and upgraded Lexus Premium Navigation. For a safer and more relaxing drive, every CT is equipped with pioneering Lexus Safety System + that includes a Pre-Collision System with pedestrian detection and Lane Keeping Assist.





CT 200h



**01. MODEL**

The stunning CT 200h compact, powered by Lexus Hybrid Drive, the world's favourite hybrid drivetrain.

Pages 26-29



**02. GRADES**

What kind of CT best fits your lifestyle in the city? Select from Eco, Comfort, F SPORT or Executive grades.

Pages 30-31



**03. FEATURES**

Discover the amazing level of standard and exciting optional features available for your CT.

Pages 32-35



**04. TECHNOLOGY**

Learn more about innovative CT technologies like Lexus Safety System + and Lexus Premium Navigation.

Pages 36-39



**05. F SPORT**

Find out what makes the F SPORT so special.

Pages 40-41



**06. ACCESSORIES**

Browse our great range of CT accessories.

Pages 42-43



**07. COLOURS**

Select from an exciting range of new exterior colours and specify a 'Takumi'-crafted interior that will thrill every time you drive your CT.

Pages 44-47



**08. EQUIPMENT**

Read about the equipment and options you can specify with your CT.

Pages 48-51



**09. TECHNICAL DATA**

Study all the key performance data before ordering your CT hybrid compact.

Pages 52-53

# THE CT 200h

Drive the CT 200h and you'll discover responsive handling and smooth acceleration. Powered by Lexus Hybrid Drive, the CT seamlessly combines an advanced 1.8-litre Atkinson Cycle petrol engine with a high-output electric motor. Importantly, this pioneering compact consumes a mere 3.6 l/100 km\* of fuel.

\* For the Eco grade.



Stunning Sonic Titanium bodywork,  
17" 5-twin-spoke alloy wheels, powered by Lexus Hybrid Drive.



# LEXUS HYBRID DRIVE

In 2004, Lexus became the first premium carmaker to perfect Full Hybrid technology. Since then, over one million Lexus hybrid models have been sold. The CT 200h delivers astonishingly smooth performance and low CO<sub>2</sub> emissions from just 82 g/km. It achieves this by orchestrating a combination of super-efficient 1.8-litre petrol engine, high-output electric motor, compact battery, seamless hybrid transmission and a power control unit. More information: [www.lexus.eu/hybrid](http://www.lexus.eu/hybrid)



## **1.8-LITRE 4-CYLINDER PETROL ENGINE**

Featuring Start/Stop capability, Exhaust Gas Recirculation and Variable Valve Timing-intelligent technologies, this quiet and smooth 'Atkinson Cycle' petrol engine provides exceptional fuel efficiency and significantly reduced emissions.



## **HIGH-OUTPUT ELECTRIC MOTOR**

Generating up to 207 Nm of instantaneous and linear torque, the 82 DIN hp electric motor works together with the petrol engine to boost acceleration, and is the sole source of power in EV (Electric Vehicle) mode.



## **ADVANCED COMPACT BATTERY**

Lexus Hybrid Drive includes a high-output, nickel-metal hydride 202 V battery controlled by sophisticated energy-management software. Located under the luggage area, without compromising interior space, the battery is recharged as necessary while driving and requires no external charging.

---

## EXPERIENCE LEXUS HYBRID DRIVE

---



### **START UP, DRIVING OFF**

When starting off, the electric motor can propel the CT 200h up to 45 km/h, with electric power being supplied from the hybrid battery. At this point the vehicle is almost silent, uses no petrol and produces zero emissions.

### **NORMAL DRIVING CONDITIONS**

At speeds above 45 km/h the advanced petrol engine cuts in quietly, but still receives assistance from the electric motor when required. Through the near perfect distribution of its dual power sources, the CT 200h provides exceptional driving comfort - together with lower emissions and fuel consumption.





**FULL THROTTLE ACCELERATION**

Accelerate powerfully and the 82 DIN hp electric motor instantaneously supplements the 1.8-litre petrol engine. This delivers a surge of torque to provide powerful linear acceleration precisely when you need it.

**DECELERATION, STOPPING, BRAKING**

When decelerating or coming to a halt, the petrol engine turns off, cutting emissions to zero. Brake, or take your foot off the accelerator, and regenerative braking harnesses the kinetic energy lost in other cars. It converts this into electrical energy for storage in the hybrid battery, which is one reason why you never need to recharge a Lexus Full Hybrid.







## ECO

As you'd expect from Lexus, this package has a substantial level of standard equipment.

- 15" alloy wheels
- Halogen headlights with Automatic High Beam
- Fabric upholstery
- 6-speaker Panasonic® audio system

- 7" Lexus Media Display, rotary dial
- 2-zone electronic climate control
- Lexus Safety System +



## COMFORT

The Comfort grade offers CT 200h owners both great looks and more driving refinement.

- 16" alloy wheels

- LED front fog lights



## F SPORT

For those in search of a more dynamic look, the F SPORT grade offers features like an exclusive 'spindle grille' and F SPORT wheels.

- 17" alloy wheels, F SPORT design
- F SPORT front and rear bumper
- Rear spoiler
- Privacy glass

- Fabric / Tahara trim
- Drilled aluminium pedals
- F SPORT steering wheel and gearshift
- Front and rear performance rods



## EXECUTIVE

Created for business drivers, the Executive grade is guaranteed to turn heads in the car park.

- 17" alloy wheels
- LED headlights with Automatic High Beam
- Smooth leather upholstery

- Heated front seats
- 10-speaker Panasonic® audio system
- 10.3" Lexus Premium Navigation, Remote Touch



01

**01. 15" ALLOY WHEELS**

Lightweight and compact, these 15" alloy wheels are specified with low rolling resistance tyres. This wheel and tyre combination reduces CO<sub>2</sub> and fuel consumption.



02

**02. 16" ALLOY WHEELS**

Accentuating the CT's exciting looks, these newly designed 5-twin-spoke alloy wheels feature a sweeping machined finish and dark grey metallic paint highlights.



03

**03. 17" ALLOY WHEELS**

Dynamic 5-twin-spoke alloy wheels, equipped with lower profile 215/45 R17 tyres, give a purposeful and sporty impression.

**04. HALOGEN HEADLIGHTS**

Featuring halogen bulbs, this headlight design is modern and impactful. Light Emitting Diode daytime running lights create a distinctive appearance and ensure the CT is highly visible to other road users.

**05. LED HEADLIGHTS**

For an even sharper look, the CT's new LED headlights feature arrowhead daytime running lights (DRL) arranged above the headlights to give a sense of visual continuity with the compact's character lines. The DRL lens surface now carries an L-shaped pattern, providing a captivating three-dimensional look. Importantly for an eco car, the LED headlights use less energy, last longer and also react more quickly than conventional bulbs.

**06. LED REAR LIGHTS**

For a more dynamic stance, the rear lights have been enlarged and are now all-LED, contributing to increased visibility. At night, the L-shaped graphic illuminates to strongly underline the Lexus brand identity of the CT.

**07. SPINDLE GRILLE**

The CT's 'spindle grille' has an exquisite, spindle shaped mesh finished in bright metallic paint. For an intriguing effect, the size of the grille mesh varies from top to bottom.

**08. PRIVACY GLASS**

The rear side windows and rear window are treated with a reflective tint, which provides rear seat passengers with privacy. This does not, however, restrict the view from inside the CT to the world outside.

**09. REAR DESIGN**

The rear tailgate features a strongly flared centre section that creates a sleek and sporty impression while underlining the distinctive silhouette of the CT.

**10. TWO-TONE EXTERIOR COLOUR**

In addition to a great range of single exterior colours, the CT can also be ordered with stylish two-tone exterior paint schemes. The F SPORT is available in an exclusive black two-tone and other grades in grey two-tone.





04



05



06



07



08



09/10



01/02

**01. DRIVER-FOCUSED COCKPIT**

To reduce eye movement and potential distractions, all important instruments and displays are positioned close to your view of the road ahead.

**02. SPORTS STEERING WHEEL**

An LFA-inspired, 3-spoke leather steering wheel with ergonomic finger rests makes the CT very precise to drive. Without taking your hands off the wheel, you can control audio, telephone, voice command, multi-information display and, where optionally specified, Adaptive Cruise Control.

**03. HEATED FRONT SEATS**

By warming your body directly, seat heaters on the CT are used proactively in order to reduce the workload of the air conditioning unit, contributing to enhanced fuel economy.



03

**04. COMPACT FLEXIBILITY**

The CT 200h offers excellent luggage space and load carrying versatility. With all seats upright, there is 375 litres of load volume; enough for two large suitcases. The rear seats fold 60/40, and folding them down together creates a virtually flat storage area that boosts load capacity to 985 litres.

**05. 2-ZONE ELECTRONIC CLIMATE CONTROL**

Allowing independent temperature control for the driver and front passenger, this compact and lightweight air conditioning unit achieves excellent cooling performance while reducing overall power consumption.

**06. FABRIC SEATS**

Equipped with hard-wearing fabric upholstery as standard, the front seats offer extra lateral support when cornering.



04

**07. FABRIC / TAHARA SEATS**

Newly designed fabric / Tahara seats offer an attractive yet very practical alternative when selecting your CT.

**08. LEATHER SEATS**

These sumptuous leather seats are overseen by an elite group of 'Takumi' craftspeople, each with up to 25 years of experience working for Lexus.



05





06



07



08

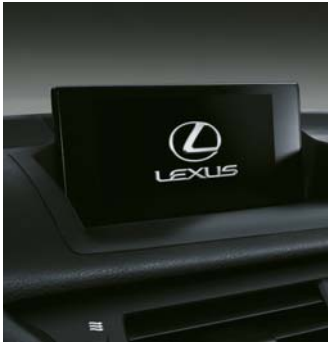




01



02



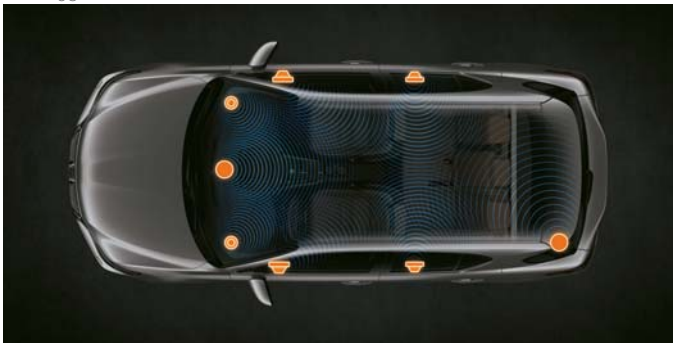
03



04



05



06



07

### 01. MULTI-INFORMATION DISPLAY

To keep you up-to-date with all key driving data – such as safety warnings and navigation guidance – a colour multi-information display is integrated within the central instruments.

### 02. LEXUS CONNECTED (AVAILABLE JANUARY 2018)\*

Turns your car into a mobile WiFi hotspot enabling connectivity for your navigation system and up to 9 other WiFi devices simultaneously including phones, tablets and laptops. It fixes securely in your car, with no trailing leads and wires, directly into the battery system for a constant power supply.

### 03. LEXUS MEDIA DISPLAY

The CT is available with Lexus Media Display, which features a 7-inch screen operated by a rotary dial. You are able to adjust audio, climate settings or view the energy monitor via this display. Compatible smartphones can be 'mirror linked', letting you view and control certain elements of your phone.

### 04. LEXUS PREMIUM NAVIGATION

Perfectly positioned for a relaxing drive, the extra large high definition 10.3-inch central display can be operated by voice command or Remote Touch, that's as easy to use as a computer mouse. Its split-screen capability allows you to simultaneously access information, such as Lexus Premium Navigation and climate data.

### 05. 6-SPEAKER PANASONIC®

Featuring bio-sourced bamboo charcoal resin speaker diaphragms for clearer sound performance and recyclability, a 6-speaker Panasonic® audio system is fitted as standard. This features an AM/FM RDS tuner, CD player and has Bluetooth® connectivity for audio / mobile phone.

### 06. 10-SPEAKER PANASONIC®

Featuring energy-saving technology, the 10-speaker Panasonic® system, with a separate lightweight amplifier, offers even greater audio fidelity. Supplied with Lexus Premium Navigation, a DVD player lets you watch favourite movies on the central screen, when stationary.

### 07. 13-SPEAKER MARK LEVINSON®

The 13-speaker Mark Levinson® Premium Surround system is tailored to the specific acoustic properties of the CT cabin. Delivering 7.1-channel digital surround sound, it provides a home-theatre experience for enjoying CDs and DVDs.

\* Available as an accessory.

**08. EV MODE / DRIVE MODE SELECT**

The CT has four selectable drive modes. EV mode provides whisper quiet, emission-free progress purely using electric power. ECO and NORMAL modes combine petrol and electric power for relaxed, higher speed driving. SPORT mode delivers a more dynamic driving experience.



08

**09. AERODYNAMICS**

The CT has excellent aerodynamics, thanks to its low bonnet, long roofline and rear spoiler/diffuser/winglets. A look underneath this breakthrough compact reveals more, with aerodynamic engine/fuel tank covers and surfboard-like fins that give better stability. This attention to detail not only enhances dynamic performance and handling, but also improves fuel efficiency and reduces wind noise.



09

**10. DOUBLE WISHBONE REAR SUSPENSION**

The double wishbone/trailing arm rear suspension, developed specially for the CT, results in a smoother ride, refined cornering agility and superb straight line stability. More complex to manufacture than strut-based alternatives, its compact design encroaches less into the rear luggage space.



10

**11. PERFORMANCE DAMPERS**

Performance dampers are also available front and rear. These absorb fine vibrations, increase ride comfort and create a more precise steering feel.



11

**12. HILL-START ASSIST CONTROL**

Hill-start Assist Control maintains brake pressure to help prevent the CT from moving backwards when starting off on a slope. In addition to reducing driver fatigue, Hill-start Assist Control also minimises wheel-spin on slippery inclines.



12



01

**01. PASSENGER SAFETY CELL**

For added safety, the CT has a very strong passenger cell. The car's main pillars are specially reinforced and high tensile steel has been used strategically throughout. Crumple zones front and rear absorb energy in a crash, as does the steering column, which is engineered to collapse on impact.



02

**02. WHIPLASH INJURY LESSENING SEATS**

The front seat and headrest design minimise whiplash-inducing neck motion in a rear impact. Reinforced side frames let the torso sink into the seatback, while the forward placement of the headrest supports the head more effectively.



03

**03. PARKING ASSIST MONITOR**

To make parking even easier, sensors in the rear bumper link with an in-car beeper to warn of obstacles in your way. The beeper can be turned off when not required. Engage reverse and the view behind the CT is relayed to the 10.3-inch display, complete with on-screen guides to assist parking.



04

**04. 8 AIRBAGS**

The CT is equipped with eight airbags and front seatbelt pre-tensioners. In a collision, impact intensity sensors activate front dual-stage driver/passenger airbags and side airbags accordingly. Front seat passengers also benefit from knee airbags, while curtain shield airbags run the full length of the side windows.



05

**05. TYRE PRESSURE WARNING SYSTEM**

Receiving data from a sensor installed in each tyre, the multi-information display tracks tyre pressure data and warns accordingly should pressure drop in one or more tyres.



**06. LEXUS SAFETY SYSTEM +**

Standard on all CT models, Lexus Safety System + includes a Pre-Collision System with pedestrian detection; Lane Keeping Assist with Sway Warning function to help you stay on course; Automatic High Beam for enhanced vision at night; Road Sign Assist that recognises traffic signs and Adaptive Cruise Control, which regulates your speed to that of the vehicle in front.



06

**07. PRE-COLLISION SYSTEM**

If the CT's millimetre-wave radar identifies a high risk of collision, you'll experience warnings and brake pressure will be increased. Should a collision be deemed unavoidable, the brakes will be applied automatically as necessary and the front seatbelts tightened.



07

**08. LANE KEEPING ASSIST & AUTOMATIC HIGH BEAM**

If you start drifting out of lane, Lane Keeping Assist will activate a warning buzzer and give brief corrective steering input. In darkness, Automatic High Beam uses the same camera as Lane Keeping Assist to detect oncoming vehicles and automatically dip the high beam headlights.



08

**09. ADAPTIVE CRUISE CONTROL**

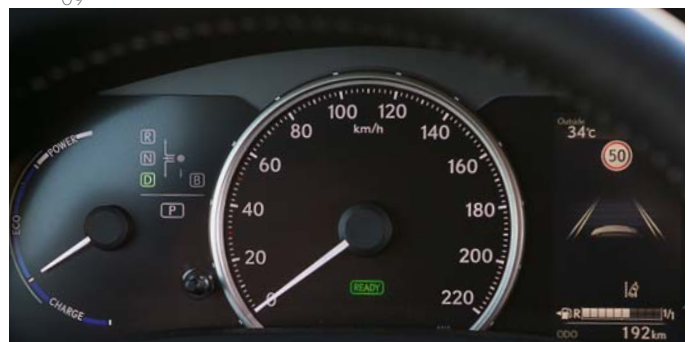
Using millimetre-wave radar, this advanced feature keeps a set distance between you and the vehicle ahead, even if that vehicle varies its speed.



09

**10. ROAD SIGN ASSIST**

This convenient system on the CT recognises traffic signs using the windscreen mounted camera, and provides information in the multi-information display.



10



01



02

**01. F SPORT SCUFF PLATES**

Front door scuff plates provide durable protection. Finished with a brushed aluminium look, they are inscribed with the Lexus logo in Jet Black.

**02. F SPORT BADGE**

Although discreet, the F SPORT logo is a badge of distinction. The 'F' refers to the birthplace and primary testing site of our high-performance F SPORT cars: Fuji Speedway, located near Mount Fuji.

**03. F SPORT 16" ALLOY WHEELS**

These optional 5-twin-spoke alloy wheels have a dark metallic finish with a black centre ornament. Each spoke is subtly grooved.



03



04

**04. F SPORT 17" ALLOY WHEELS**

Specially developed for the F SPORT model, these 17-inch alloy wheels feature a 5-twin-spoke design with a distinctive dark premium metallic finish. Low-profile tyres ensure superbly confident cornering performance.

**05. F SPORT FRONT DESIGN**

The CT 200h F SPORT features an unmistakably dynamic black metallic 'spindle grille', with the intricate mesh design inspired by the new LS luxury sedan. Large fog light surrounds with the same mesh pattern underline the striking overall look.

**06. F SPORT REAR BUMPER AND SPOILER**

To the rear the CT F SPORT is no less dynamic, with features like an eye-catching reflector surround in an exclusive F SPORT mesh pattern and black paint highlights on the lower bumper.



05



06

**07. F SPORT SEATS**

In a driving position that is sporty and focused, these exclusive seats provide the perfect fit to enjoy the CT 200h F SPORT to the full.

**08. LEATHER SEATS**

Exclusive F SPORT leather seats are stitched by an elite group of 'Takumi' craftspeople and offer more luxury to you and your passengers.

**09. F SPORT STEERING WHEEL AND GEARSHIFT**

Featuring the F SPORT logo, this beautifully crafted steering wheel was inspired by that of our iconic LFA supercar. Finished in perforated leather, the F SPORT gearshift design matches the steering wheel to create an exciting sports ambiance.

**10. 'NAGURI-STYLE ALUMINIUM' INLAYS**

'Naguri-Style Aluminium' inlays - first seen on the GS F high performance sedan and inspired by ancient Japanese craftsmanship - are also available on F SPORT models.

**11. DRILLED SPORT PEDALS**

Offering excellent grip characteristics, drilled aluminium pedals reflect the motorsport design heritage of the CT F SPORT models.



07/08



09



10



11



## ACCESSORIES



01



02

### 01. REAR BUMPER PROTECTION PLATE

Guards the bumper against scratching when loading or unloading the luggage space.

### 02. LUGGAGE MAT

A stylish textile mat to protect your boot carpet. Its tailored design fits around or across the rear seat backs when one or both are folded flat.

### 03. BIKE HOLDER

A lightweight yet high strength stand-alone lockable design for carrying one or two bicycles.



03

### 04. ROOF RACK

This lockable and lightweight aluminium roof rack is aerodynamically shaped to reduce wind noise. Easy to install and remove, it forms a strong base for a range of optional carrying and storage attachments.

### 05. HORIZONTAL CARGO NET

Noise and vibrations caused by luggage sliding in the boot can be a distraction to safe driving. This horizontal net provides a convenient solution by firmly securing your luggage.

### 06. ILLUMINATED SCUFF PLATES

A stylish design feature that also gives tough protection for the door sill paintwork.



04

### 07. CARBON INSERT SET

Sports inspired insert panels with a carbon fibre finish for the dashboard and door control panels. The set complements Lexus' carbon fibre-look side mirror covers. Other finishes are also available.



05



06



07

**08. PORTABLE DVD PLAYER**

This DVD player with 7" screen offers great entertainment for rear seat passengers on longer journeys. It has comprehensive multimedia flexibility, USB and SD card slots, smartphone AV input, and can also be used at home with a suitable power adapter.



08

**09. FRONT GRILLE GARNISH**

With a piano black finish to highlight the dynamic profile of the CT 200h's 'spindle grille'.



09

**10. 16" FUYU ALLOY WHEELS**

10-spoke wheel with metallic finish complements the CT 200h's sporty looks.



10

**11. 16" FUYU ALLOY WHEELS**

10-spoke anthracite wheels for a stunning impression.



11

**12. 17" ZENGA ALLOY WHEELS**

10-spoke design with a stunning metallic finish.



12

**13. 17" ZENGA ALLOY WHEELS**

10-spoke design in a distinctive anthracite colour.



13

**14. 17" ZENGA ALLOY WHEELS**

10-spoke design in a distinctive black look.



14

**15. 17" YUME ALLOY WHEELS**

5-twin-spoke design with attractive pearl white finish.



15

**16. 17" YUME ALLOY WHEELS**

5-twin-spoke design with a dynamic black finish.



16

**17. F SPORT 17" ALLOY WHEELS**

5-triple-spoke wheel with a truly dynamic sports design and anthracite finish.



17

## DEVELOPING A NEW LEXUS PAINT COLOUR IS BOTH COMPLEX AND TIME CONSUMING



Lexus designers never use off-the-shelf colours, preferring instead to develop their own, from scratch, a process that can take up to two years. The Lexus paint palette totals some 30 different colours including metallic finishes like Sonic White and Sonic Titanium.

There are no shortcuts to creating a new Lexus colour: A designer's decision comes only after going through hundreds of samples. "When developing a new colour I see so many shades of paint that I sometimes can't see straight at the end of the day," says Megumi Suzuki, one of our most experienced colour designers. To do her job, it takes a grasp of chromogenics and a keen eye.

"Every time I meet someone or walk into a shop or go to someone's house, I check out colours and materials," she says. "There are a lot of people like me in our division."

Even after a colour has been decided upon, there's plenty to do. At various stages during development, Suzuki had to enlist a small army of experts: Lab technicians who mix the paint, clay sculptors, engineers and the assembly-line paint shop crew who would give each car a flawless, uniform coat. Every few weeks Kansai Paint (a Lexus paint supplier) produces a new batch, and Lexus designers give the samples a thorough look-over, bending the test panels to mimic the contours of a car. All are scrutinised indoors and outdoors, under floodlights, in sunlight, shade and overcast conditions, and at different times of the day and months of the year.

Selecting the final colour is not easy. A colour that is dazzling on a summer morning can appear sickly in the shade or under showroom lights. Designers also have to contend with the vagaries of their own preferences. "The odd thing about colour is that your perception of it can change depending on the season, how you feel that day and the trends you're seeing," says Suzuki.



**F WHITE** | 083<sup>1,4</sup>



**SONIC WHITE** | 085<sup>2,5</sup>



**SONIC TITANIUM** | 117<sup>4</sup>



**MERCURY GREY** | 119<sup>4</sup>



**BLACK** | 212<sup>3</sup>



**GRAPHITE BLACK** | 223<sup>5</sup>



**RED** | 3T2<sup>3,4</sup>



**MORELLO RED** | 3R1<sup>4,6</sup>



**COPPER BROWN** | 4X2<sup>2</sup>



**SOLAR FLARE** | 4W7<sup>1,4</sup>



**SKY BLUE** | 8X9<sup>4</sup>



**SAPPHIRE BLUE** | 8X1<sup>1,4</sup>



**DEEP BLUE** | 8X5



<sup>1</sup> Exclusive to F SPORT.

<sup>2</sup> Not available on F SPORT.

<sup>3</sup> Solid colour

<sup>4</sup> Also available in combination with Black (212) roof on F SPORT.

<sup>5</sup> Also available in combination with Sonic Titanium (117) roof on Comfort and Executive grades.

<sup>6</sup> Also available in combination with Mercury Grey (119) roof on Comfort and Executive grades.

Please note: due to printing variances, actual paintwork colours may vary slightly from those illustrated.

**FABRIC<sup>1</sup>**



Black



Black & Red



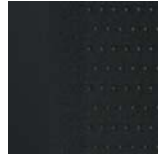
Sandstone & Black

**FABRIC / TAHARA TRIM<sup>2</sup>**

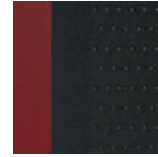


Black

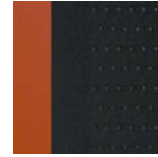
**F SPORT FABRIC / TAHARA TRIM<sup>3</sup>**



Black



Black & Flare Red



Black & Orange

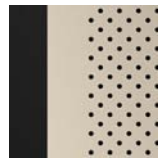
**LEATHER<sup>4</sup>**



Black



Sandstone & Black



White & Black

**F SPORT LEATHER<sup>5</sup>**



Black



White & Black

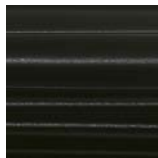


Flare Red & Black

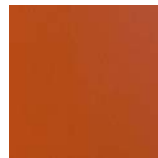
**INLAYS<sup>6</sup>**



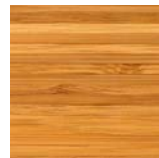
Storm Black



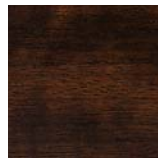
Techno Black



Orange



Bamboo

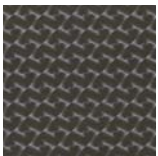


Dark Brown,  
ash burl

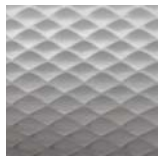


Black & Grey,  
Shimamoku

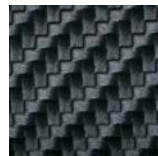
**F SPORT INLAYS<sup>7</sup>**



Silver, metal film



Naguri-Style  
Aluminium



Carbon Fibre,  
set of inlays

<sup>1</sup> Fabric trim is standard on Eco and Comfort grades.

<sup>2</sup> Fabric / Tahara trim is optional on Comfort grade.

<sup>3</sup> F SPORT fabric / Tahara trim is specified as standard for the F SPORT model.

<sup>4</sup> Leather is specified as standard on Executive grade and can be ordered as part of the leather plus pack option on Comfort grade.

<sup>5</sup> F SPORT leather can be ordered as part of the F SPORT leather plus pack option on F SPORT.

<sup>6</sup> Storm Black inlay is standard on Eco and Comfort grades, while Techno Black is standard on Executive grade. Orange and a choice of three wood inlays can be ordered as an option on Eco, Comfort and Executive grades.

<sup>7</sup> Silver, metal film inlay is standard on F SPORT. Naguri-Style Aluminium is available as an option. A set of carbon fibre inlays is available as an after-sales upgrade.

The images on the following page illustrates a selection of the interior combinations available. Your local Lexus Authorised Retailer will be pleased to provide you with any further help.



01



05



02



06



03



07



04



08

- 01 Black and Red fabric with Storm Black inlay (Comfort)
- 02 Sandstone and Black fabric with Storm Black inlay (Comfort)
- 03 Black fabric / Tahara trim with Orange inlay (Comfort)
- 04 Black and Orange F SPORT fabric / Tahara trim with Silver, metal film inlay (F SPORT)

- 05 Sandstone and Black leather with Dark Brown, ash burl inlay (Executive)
- 06 White and Black leather with Black & Grey Shimamoku inlay (Executive)
- 07 Black leather with Bamboo inlay (Executive)
- 08 Flare Red and Black F SPORT leather with Naguri-Style Aluminium inlay (F SPORT)



EXTERIOR	ECO	COMFORT	F SPORT	EXECUTIVE
Antenna, shark fin design	■	■	■	■
Auto-levelling headlights	□	□	□	■
Bumper and grille garnish, black chrome	-	-	■	-
Daytime running lights, LED	■	■	■	■
Door mirrors, auto-folding, heated	■	■	■	■
Door mirrors, electrically adjustable with memory, auto-folding, electro chromatic (auto-dimming), heated	-	-	□	■
F-mesh spindle grille	-	-	■	-
Front fog lights, LED	○/□	■	■	■
Headlight cleaners	□	□	□	■
Headlights, halogen	■	■	■	-
Headlights, LED	□	□	□	■
Parking assist sensors, front and rear	□	□	□	■
Privacy glass	○	○	■	○
Rain sensing windscreen wipers	■	■	■	■
Rear combination lights, LED	■	■	■	■
Rear spoiler	■	■	-	■
Rear spoiler, F SPORT design	-	-	■	-
Smart entry system	○	○	○	■
Ultra Violet (UV) and heat insulating tinted glass	■	■	-	■
<b>WHEELS</b>				
15" alloy wheels, 195/65 R15 tyres	■	-	-	-
16" alloy wheels, two-tone finish, 205/55 R16 tyres	-	■	-	○
16" alloy wheels, F SPORT design, 205/55 R16 tyres	-	-	○	-
17" alloy wheels, 5-twin-spoke design, 215/45 R17 tyres	-	○	-	■
17" alloy wheels, F SPORT design, 215/45 R17 tyres	-	-	■	-
<b>ACTIVE SAFETY AND DRIVING DYNAMICS</b>				
Lane Keeping Assist (LKA)	■	■	■	■
Anti-lock Braking System (ABS)	■	■	■	■
Automatic High Beam (AHB)	■	■	■	■
Drive Mode Select (ECO / NORMAL / SPORT)	■	■	■	■
Electronic Brake-force Distribution (EBD)	■	■	■	■
Electronically Controlled Braking-Regeneration (ECB-R)	■	■	■	■
EV (Electric Vehicle) mode	■	■	■	■
Front and rear performance damper	-	-	■	○
Hill-start Assist Control (HAC)	■	■	■	■
Pre-Collision System (PCS)	■	■	■	■
Road Sign Assist (RSA)	■	■	■	■
Tyre Pressure Warning System (TPWS)	■	■	■	■

<b>PASSIVE SAFETY</b>	<b>ECO</b>	<b>COMFORT</b>	<b>F SPORT</b>	<b>EXECUTIVE</b>
Airbag cut-off switch, front passenger	■	■	■	■
Airbags, driver and front passenger; head, side and knee / full-length curtain shield	■	■	■	■
Audible and visual seatbelt reminder	■	■	■	■
ISOFIX attachment, outer rear seats	■	■	■	■
Seatbelt pre-tensioners, front seats	■	■	■	■
<b>SECURITY</b>				
Anti-theft system - immobiliser	■	■	■	■
Anti-theft system - intrusion sensor / inclination sensor / siren	○	○	○	○
Anti-theft system - intrusion sensor / siren / immobiliser	○	○	○	○
Wireless door locking	■	■	■	■
<b>AUDIO, COMMUNICATION &amp; INFORMATION</b>				
4.2" colour multi-information display	■	■	■	■
7" Lexus Media Display	■	■	■	-
10.3" multimedia display	□	□	□	■
6-speaker Panasonic® audio system	■	■	■	-
10-speaker Panasonic® audio system	□	□	□	■
13-speaker Mark Levinson® Premium Surround system	-	-	□	○
Digital clock	■	■	■	-
Digital clock with GPS function	□	□	□	■
Bluetooth® mobile phone and audio connectivity	■	■	■	■
Lexus Premium Navigation	□	□	□	■
Parking assist monitor	○	○	○	-
Parking assist monitor with on-screen guides	□	□	□	■
Remote Touch operation for multi-information display	□	□	□	■
Rotary dial operation for Lexus Media Display	■	■	■	-
Tuner with DAB technology	○	○	○	○
USB port and AUX socket, VTR compatible	■	■	■	■

- Available as standard.
- Available as an option.
- Available as part of a pack.
- Not available.

INTERIOR COMFORT & CONVENIENCE	ECO	COMFORT	F SPORT	EXECUTIVE
3-spoke, leather trimmed steering wheel	■	■	-	■
3-spoke, perforated leather trimmed steering wheel	-	-	■	-
Adaptive Cruise control	■	■	■	■
Aluminium scuff plates with LEXUS inscription	-	-	-	○
Aluminium scuff plates with LEXUS inscription, F SPORT design	-	-	■	-
Carbon fibre, set of inlays	-	-	○	-
Dashboard inlay, Naguri-Style Aluminium	-	-	○	-
Dashboard inlay, Orange	○	○	-	○
Dashboard inlay, Silver metal film	-	-	■	-
Dashboard inlay, Storm Black	■	■	-	○
Dashboard inlay, Techno Black	○	○	-	■
Dashboard inlay, wood (choice of ash burl, bamboo or Shimamoku)	○	○	-	○
Drilled aluminium sports pedals	-	-	■	-
Electronic climate control, 2-zone	■	■	■	■
Front seats, manually adjustable, 6-way (driver), 4-way (passenger)	■	■	■	-
Front seats, electrically adjustable, 8-way with memory (driver), 4-way (passenger)	-	-	□	■
Glass sunroof, electric tilt/slide	○	○	○	○
Heated front seats	○	○/□	■	■
Heated front seats, without	■	■	○	-
Humidity sensor for electronic climate control	■	-	-	-
Leather trimmed gearshift knob	■	■	-	■
Lumbar support, electrically adjustable (driver)	-	-	□	■
Perforated leather trimmed gearshift knob	-	-	■	-
Rear-view mirror, electro chromatic (auto-dimming)	○/□	○/□	■	■
Rear-view mirror, manual dimming adjustment	■	■	-	-
Temporary spare wheel	○	○	○	○
Tyre repair kit	■	■	■	■
Upholstery, fabric	■	■	-	-
Upholstery, fabric / Tahara trim	-	○	-	-
Upholstery, F SPORT fabric / Tahara trim	-	-	■	-
Upholstery, F SPORT leather	-	-	□	-
Upholstery, leather	-	□	-	■

- Available as standard.
- Available as an option.
- Available as part of a pack.
- Not available.



PACKS	ECO	COMFORT	F SPORT	EXECUTIVE
<b>Headlights, LED plus</b>	□	□	□	■
Headlights, LED	□	□	□	■
Headlight cleaners	□	□	□	■
Auto-levelling headlights	□	□	□	■
Front fog lights, LED	○/□	■	■	■
<b>Lexus Premium Navigation plus</b>	□	□	□	■
Lexus Premium Navigation	□	□	□	■
10.3" multi-information display	□	□	□	■
Remote Touch operation for multi-information display	□	□	□	■
10-speaker Panasonic® audio system	□	□	□	■
Digital clock with GPS function	□	□	□	■
Parking assist monitor with on-screen guides	□	□	□	■
Rear-view mirror, electro chromatic (auto-dimming)	○/□	○/□	■	■
<b>Leather plus</b>	-	□	-	■
Leather upholstery	-	□	-	■
Heated front seats	○	○/□	■	■
<b>F SPORT leather plus</b>	-	-	□	-
F SPORT leather upholstery	-	-	□	-
Front seats, electrically adjustable, 8-way with memory (driver), 4-way (passenger)	-	-	□	■
Lumbar support, electrically adjustable (driver)	-	-	□	■
Heated front seats	○	○/□	■	■
Door mirrors, electrically adjustable with memory, auto-folding, electro chromatic (auto-dimming), heated	-	-	□	■
<b>Lexus Premium Navigation plus with Mark Levinson® upgrade and F SPORT leather plus</b>	-	-	□	-
Lexus Premium Navigation	□	□	□	■
10.3" multi-information display	□	□	□	■
Remote Touch operation for multi-information display	□	□	□	■
13-speaker Mark Levinson® Premium Surround system	-	-	□	○
Digital clock with GPS function	□	□	□	■
Parking assist monitor with on-screen guides	□	□	□	■
Rear-view mirror, electro chromatic (auto-dimming)	○/□	○/□	■	■
F SPORT leather upholstery	-	-	□	-
Front seats, electrically adjustable, 8-way with memory (driver), 4-way (passenger)	-	-	□	■
Lumbar support, electrically adjustable (driver)	-	-	□	■
Heated front seats	○	○/□	■	■
Door mirrors, electrically adjustable with memory, auto-folding, electro chromatic (auto-dimming), heated	-	-	□	■

- Standard on specific grade(s).
- Available as (part of) a pack.
- Available as an option.
- Not available.

## TECHNICAL DATA

ENGINE	CT 200h
Capacity (cm <sup>3</sup> )	1798
Cylinders / Valves	L4 / 16
Maximum power (DIN hp @ rpm)	99 @ 5200
Maximum power (kW @ rpm)	73 @ 5200
Maximum torque (Nm @ rpm)	142 @ 2800 - 4400
ELECTRIC MOTOR	
Type	AC synchronous, permanent magnet
Maximum power (DIN hp)	82
Maximum power (kW)	60
Maximum torque (Nm)	207
TRANSMISSION	
Type	Electronic-Continuously Variable Transmission
Drive	Front-Wheel Drive
TOTAL SYSTEM OUTPUT	
Total power (DIN hp)	136
Total power (kW)	100
PERFORMANCE	
Maximum speed (km/h)	180
Acceleration 0-100 km/h (s)	10.3
FUEL CONSUMPTION* (l/100 km)	
Urban	3.6 / 3.8 / 4.1
Extra urban	3.5 / 3.8 / 4.0
Combined	3.6 / 3.8 / 4.1
CO <sub>2</sub> EMISSIONS* (g/km)	
Urban	82 / 88 / 94
Extra urban	81 / 88 / 93
Combined	82 / 88 / 94
WEIGHTS** (kg)	
Gross vehicle	1790 / 1845
Kerb weight (min. - max.)	1370 - 1410 / 1410 - 1465
CAPACITIES*** (l)	
Luggage volume - rear seats upright - loaded to luggage cover	275
Luggage volume - rear seats upright - loaded to the roof	375
Luggage volume - rear seats folded down - loaded to the roof	985
Fuel tank capacity	45

\* Figures differ by grade and alloy wheel size. 1st figure is for the CT 200h Eco grade with 15" alloy wheels. 2nd figure is for Comfort grade with 16" alloy wheels. 3rd figure is for Executive and F SPORT grades with standard specification 17" alloy wheels and for Comfort grade with optional 17" alloy wheels.

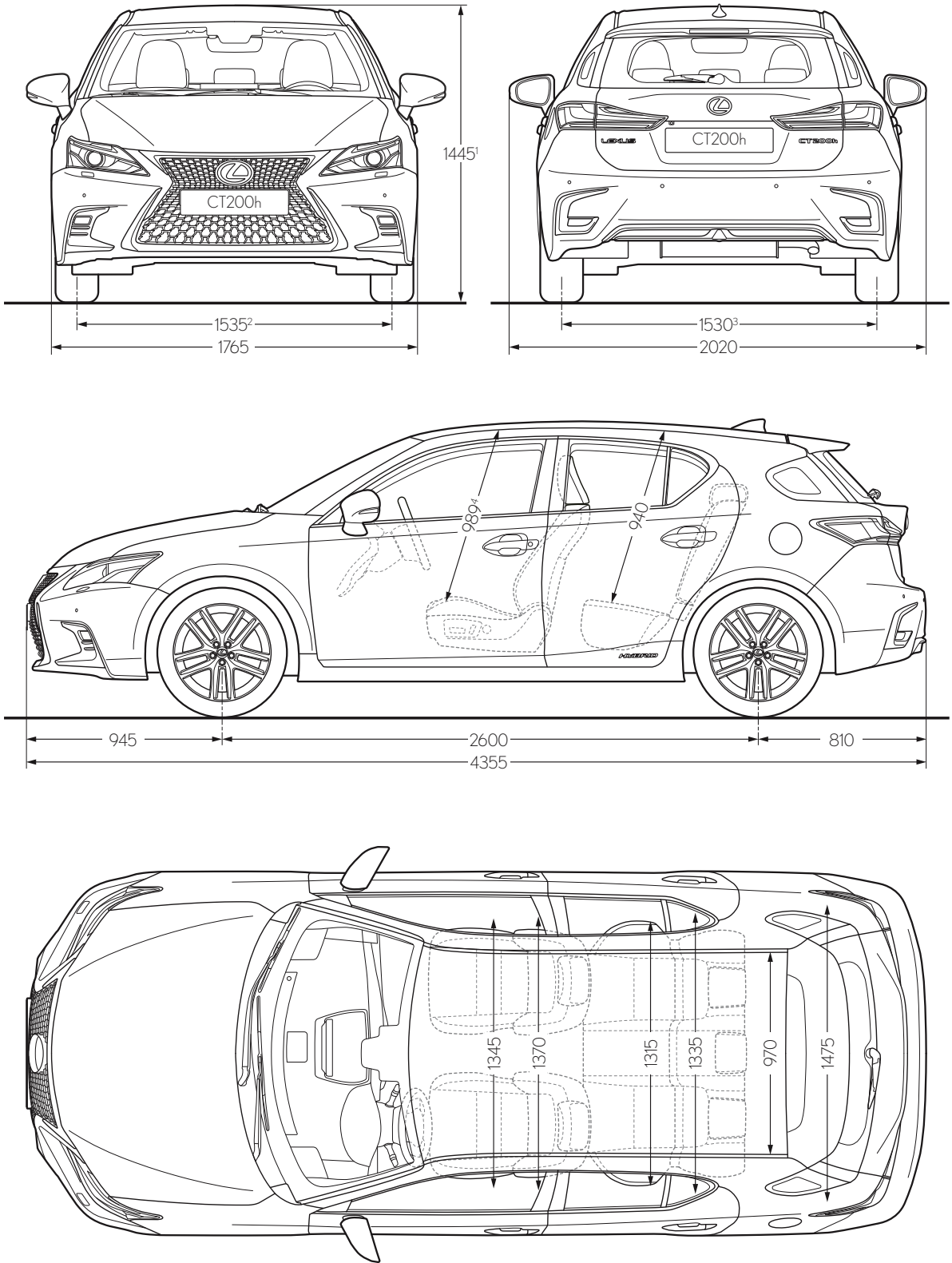
The fuel consumption and CO<sub>2</sub> values are measured in a controlled environment, in accordance with the requirements of Directive 80/1268/EEC incl. its amendments, on a vehicle with European Standard equipment. For further information, or if you are interested in purchasing a vehicle with European Standard equipment, please contact your Lexus Authorised Importer. The fuel consumption and CO<sub>2</sub> values of your vehicle may vary from those measured. Driving behaviour as well as other factors (such as road conditions, traffic, vehicle condition, tyre pressure, installed equipment, load, number of passengers, etc) play a role in determining a car's fuel consumption and CO<sub>2</sub> emissions.

\*\* First figure is for the Eco grade. Second figure is for all other grades, irrespective of alloy wheel size.

\*\*\* Luggage volume is calculated as per the VDA method on a vehicle specified with tyre repair kit. All figures quoted include the under floor storage area in the luggage compartment. With a temporary spare wheel, each figure is reduced by 30 litres.

Please note: further Technical Data, including any updates, can be found at [www.lexus.eu](http://www.lexus.eu)

TECHNICAL DATA



<sup>1</sup> Figure quoted is for the Eco grade. Equivalent figure for Comfort, F SPORT and Executive grades is 1455.

<sup>2</sup> Figure quoted is for the Eco grade. Equivalent figure for Comfort, F SPORT and Executive grades is 1525.

<sup>3</sup> Figure quoted is for the Eco grade. Equivalent figure for Comfort, F SPORT and Executive grades is 1520.

<sup>4</sup> Figure quoted is for CT models specified with the standard roof. Equivalent figure with the optional glass sunroof specified is 974.

Please note: the dimensions illustrated above are measured in millimetres.





Throughout your vehicle's life, we'll endeavour to ensure an amazing ownership experience, offering unequalled service and seamless maintenance work, all orchestrated to provide complete satisfaction and total peace of mind. When you visit our showrooms, we strive to anticipate your every need and make available the finest facilities for you to enjoy in a warm and relaxed atmosphere. In the modern Lexus lounge, you can catch up on news, browse the Internet, or enjoy refreshments. While you relax, Lexus technicians will work with precision and efficiency to get you back on the road with minimum interruption to your day.





---

## WE AIM TO TREAT EVERY CUSTOMER AS IF THEY WERE A GUEST IN OUR OWN HOME

---

Ever since we launched the first Lexus, we have always gone 'the extra mile' for our customers. Evidenced by countless awards over the last 25 years, we aim to treat every customer as if they were a guest in our home. But which other factors contribute to our peerless level of customer service? The answer lies in our Japanese heritage and one word: 'Omotenashi'

Omotenashi translates from the Japanese as 'hospitality and polite service'. However, Omotenashi is much more than excellence of service; it is an ancient Japanese concept that describes one's ability to anticipate the needs of another, even before they arise.

Omotenashi is a way of life and thinking for every single Lexus employee. Importantly, it also influences how we design and engineer cars like the CT. This is Omotenashi in physical form.

**More about the CT:**

[lexus.eu/CT](http://lexus.eu/CT)

[youtube.com/LexusEurope](https://youtube.com/LexusEurope)

[twitter.com/Lexus\\_EU](https://twitter.com/Lexus_EU)

[instagram.com/LexusEurope](https://instagram.com/LexusEurope)

---

©2017 Lexus Europe\* reserves the right to alter any details of specifications and equipment without notice. Details of specifications and equipment are also subject to change to suit local conditions and requirements. Please enquire at your local Lexus Authorised Retailer of any such changes that might be required for your area.

Note: Vehicles pictured and specifications detailed in this brochure may vary from models and equipment available in your area. Vehicle body colour might differ slightly from the printed photos in this brochure.

For further information please visit our website: [www.lexus.eu](http://www.lexus.eu)

Taking care of the environment is a priority for Lexus. We take many measures to ensure that during the lifecycles of our vehicles - from design, production, distribution, sales and service to end-of-life - their environmental impact is minimised. Your retailer will be happy to provide more information on end-of-life vehicle requirements.

\* Lexus Europe is a division of Toyota Motor Europe NV/SA.

Printed in Europe, September 2017

